

IBERO

Ciudad de México • Tijuana



Master in

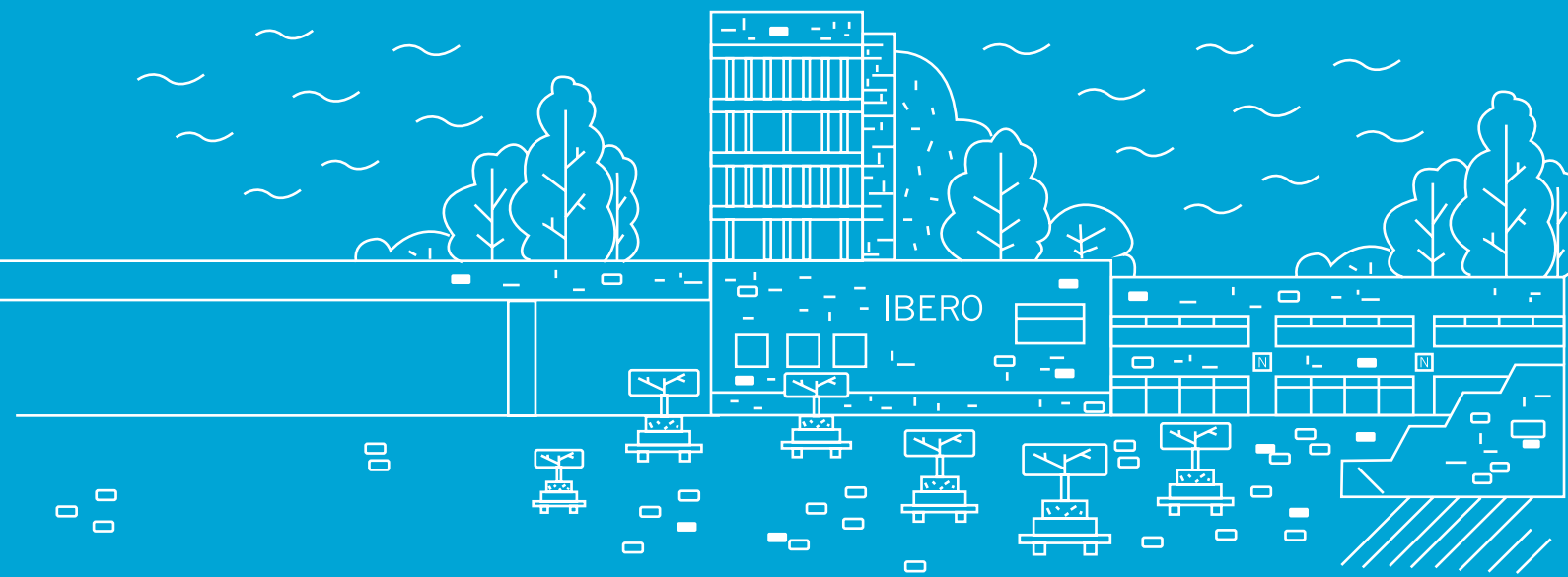
MODERN LITERATURE

The Master is part of **CONACYT's National Program of Quality Graduate Studies (PNPC)**, with the level of Program in Development.

CONTEXT AND RELEVANCE

Our Master in Modern Literature has been emblematic of Mexico's Private Universities Graduate Programs since decades ago. During this time, our program has reflected our educational philosophy with clear humanistic objectives, training academic and cultural managers. This has highlighted the Graduate Program as one where critical thinking is taught and practiced.

M



LINKAGE

The Literature Department has multiple formal and informal avenues of collaboration and exchange with higher education institutions, cultural institutions and national and foreign research centers, for both students and professors. We underscore the following links:

- *Asociación de Universidades confiadas a la Compañía de Jesús en América Latina*
- *Biblioteca Nacional del Uruguay*
- *CEPLI de la Universidad de Castilla-La Mancha*
- *Colegio de Saberes, A. C.*
- *El Colegio de Michoacán*
- *Hebrew University of Jerusalem*
- *Katolische Universität Eichstätt*
- *Loyola University Chicago*
- *Museo Universitario de Arte Contemporáneo-UNAM*
- *The University of Nottingham*
- *Universidad Autónoma Metropolitana*
- *Universidad de Almería*
- *Universidad de Deusto*
- *Universidad de Salamanca*
- *Universidad de Valladolid*
- *Universidad del Claustro de Sor Juana*
- *Universitat de València*
- *Université Lumière-Lyon 2*
- *Universiteit Leiden*
- *University of Glasgow*
- *University of Maine*
- *University of Miami*

The Graduate Program is part of the *Erasmus Mundus Joint Master Program in Crossways in Cultural Narratives*. We recently signed an agreement to establish the Rodolfo Usigli Chair, jointly with the Centro de Investigación Teatral Rodolfo Usigli-INBA.

OBJECTIVES

General

The Master's in Modern Literature contributes to the emergence of experts in literary studies, able to transfer the abilities required in academic settings, research institutions and other professional areas. The Master's allows students to continuously exercise critical thought, research skills and knowledge production abilities.

Specific

1. To contribute to the education of higher education professors, researchers (situated in the educational sector, the media, think tanks, and cultural management) and professionals (publicity, publishing houses, arts and culture industries, and literary and cultural criticism), specialized in literary studies.
2. To foster self-learning, critical thinking, and research abilities as optimal tools to learn and practice.
3. To contribute to the constructive sociocultural criticism of the region, from the standpoint of the literary studies.

APPLICANTS PROFILE

Candidates must have genuine interest in literary studies and the potential to develop complex, well-structured and grounded ideas; he or she must possess analytic and synthesis abilities, well-based judgments, critical thinking, and have writing and research abilities.

GRADUATES' PROFILE

Graduates are able to produce and develop original knowledge and deploy abilities to undertake research, substantiate ideas, search for information and have verbal skills. They are capable of reformulating perspectives and dissemination patterns.

Graduates are able to

1. Analyze, synthesize, establish well-based appraisals, and exercise critical thinking using the literary and/or interdisciplinary phenomena as baseline.
2. Transfer to his/her professional area the abilities and knowledge acquired during studying.
3. Propose new approaches to reality or its challenges, based on well-informed literary perspectives.

FIELD OF WORK

Graduates perform as faculty members, researchers (at higher education institutions, media, think tanks, or as cultural managers), and as professionals (in publicity, publishing houses, art and culture, and filmic industries, and as literary critics for the general public).

FACULTY MEMBERS

Laura Guerrero Guadarrama

Member of the National Research System, Level I. Ph.D. and M.A. in Modern Literature, B.A. in Latin American Literature, Universidad Iberoamericana.

Lines of Research:

Hermeneutics and Literature. Children's and Youth's Contemporary Literature. The Graphic Literature in the Neo-Subversive Lines of Post-Modernity.

Relevant Publications:

"Las múltiples formas y voces de la migración en la LIJ mexicana". In Roig Rechou BA, Soto López I, Neira Rodríguez M. (Eds.) *Inmigración/Emigración NA LIX*, Edicions Xerais, 2014.

Contact: laura.guerrero@ibero.mx

Juan Francisco Javier Alcántara Pohls

Ph.D. in History, M.A. in Modern Literature and B.A. in Latin American Literature, Universidad Iberoamericana

Lines of Research:

Latin American Culture, Literature, Orality and Alternatives. The Ear and Sensorial Interaction in Modern Literature.

Relevant Publications:

Botella. *Poemas 2000-2003*. México: UIA, 2013; *El río (notas y poemas)*. México: Fondo de Cultura Económica, 2013.

Contact: juan.alcantara@ibero.mx

Michelle Gama Leyva

Ph.D. in Theory of Literature and Comparative Literature, Universitat Autònoma de Barcelona M.A. in Modern Literature and B.A. in Latin American Literature, Universidad Iberoamericana

Lines of Research:

Hermeneutics and Literature. Gender Studies and Discourses, Post-humanism and Contemporary Narrative.

Contact: michelle.gama@ibero.mx

Alethia Alfonso García*Ph.D. in Iberian and Latin American Studies, Birkbeck College-University of London**B. A. in Latin American Literature, Universidad Iberoamericana***Lines of Research:**

Construction of Meaning in Cultural Objects, Theater Textures and Textuality. Research Project in initial phase: The Ethical-Aesthetic Consequences and Eco-Criticism of Radical Poetics in English, Spanish and Portuguese-Speaking Authors.

Relevant Publications:

“Roundabout I-VI de Martín Gubbins o dos lecturas de lo ilegible”. Desde el sur: Revista de ciencias humanas y sociales de la Universidad Científica del Sur. Vol. 8. Núm. 2. 2016. Printed and online versions. pp. 339-251; “Perché non escrivì più? El nudo según Eielson o la ecología del nudo y la crítica”. In Lourido I y Cid A. (Eds.) La poesía actual en el espacio público. España/Francia: Orbis Tertius, 2015. p 143-164; “Eielson: nudos y lecciones para el siglo XXI”. In Mario Pera (Ed.) Jorge Eduardo Eielson. Homenaje 90 años. Vallejo & Co., 2015. pp. 39-47.

Contact: alethia.alfonso@ibero.mx

Joseba Buj Corrales*Ph.D. and M.A. in Modern Literature, Universidad Iberoamericana**B.A. in Law, Universidad de Deusto***Lines of Investigation:**

Construction of Meaning in Cultural Objects, Theater Textures and Textuality. Interdisciplinary Chair of **Critical Studies:** Policies and Potentialities of the Non(re)presented: Exclusion, Bare Life and Clandestineness.

Relevant Publications:

Ángel J, Buj J, Lonna I. (coords.). Im/pre-visto. Narrativas digitales. Madrid: Fundación Telefónica/Ariel, 2016; Emplazamiento crítico a la figura estético/historigráfica de un prócer. México: Asociación Mexicana de Archivos y Bibliotecas Privados de México, 2016.

Contact: joseba.buj@ibero.mx

Panagiotis Deligiannakis*Ph.D. in Literature and M.A. in Ibero-American Literature, Universidad Nacional Autónoma de México**B.Sc. in Social Sciences, University of Maryland***Lines of Research:**

Latin American Culture, Literature, Orality and Alternative Proposals. Literature of the Southern Cone: Latin American Avant-Garde and the Fantastic Story of Felisberto Hernández.

Relevant Publications:

“Incidencia y contingencia en la percepción dialéctica de El llano en llamas”. In: Alberto Vital, María Esther Guzman and Estella Cuellar (Eds.). 60 años de El llano en llamas. Reflexiones académicas. México: UNAM/ IIF, 2015. pp. 239-245.

Contact: panagiotis.deligiannakis@ibero.mx

Tania Favela Bustillo*Ph.D. in Literature, Universidad Nacional Autónoma de México**M.A. in Modern Literature and B.A. in Latin American Literature, Universidad Iberoamericana***Lines of Research:**

Latin American Culture, Literature, Orality and Alternative Proposals. Modern and Contemporary Peruvian, Mexican, and Spaniard Poetry.

Relevant Publications:

Pequeños resquicios. México: Textofilia, 2013; Prologue and Selection In José Watanabe. El desierto nunca se acaba. México: Textofilia, 2013.

Contact: tania.favela@ibero.mx

(Doctorate in Modern Literature Program Coordinator)**Luis Felipe Canudas Orezza Ugalde***M.A. and B.A. in Modern Literature, Universidad Iberoamericana***Lines of Research:**

Hermeneutics and Literature. Gender Studies and Contemporary Literature.

(Head of the Literature Department)

Contact: felipe.canudas@ibero.mx

José Ramón Alcántara Mejía*Member of the National Research System, Level II**Ph.D. in Hispanic Studies, University of British Columbia**M.A. in Romance Literature and B.A. in Literature and Psychology, University of Washington-Seattle***Lines of Research:**

Construction of Meaning in Cultural Objects, Theater Textures and Textuality. Social Dramas II: Violence Policies, Violence in Politics and Emergent Theatricalities. Interdisciplinary Chair of Critical Studies: Policies and Potentialities of the Non(re)presented: Exclusion, Bare Life and Clandestineness.

Relevant Publications:

“Violencia de las políticas y políticas de la violencia: nomadismo y teatro” In Alcántara JR and Yangali J. (Eds.) La re/presentación de la violencia en el teatro latinoamericano contemporáneo: ¿Ética y/o estética? México: Universidad Iberoamericana, 2016; Mimesis, teatro y realidad. Asociación Internacional para la promoción de la educación superior cristiana/ International Association for the Promotion of Christian Higher Education, 2016.

Contact: jose.r.alcantara@ibero.mx

Michelle Gama Leyva*Ph.D. in Theory of Literature and Comparative Literature, Universitat Autònoma de Barcelona**M.A. in Modern Literature and B.A. in Latin American Literature, Universidad Iberoamericana***Lines of Research:**

Hermeneutics and Literature. Gender Studies and Discourses, Post-humanism and Contemporary Narrative.

Contact: michelle.gama@ibero.mx

Gloria María Prado Garduño*Emeritus Academic**Member of the National Research System, Level I.**Ph.D. in Modern Literature, Universidad Iberoamericana**M.A. in Hispanic Language and Literature and B.A. in Spaniard Literature and Language, Universidad Nacional Autónoma de México***Lines of Research:**

Hermeneutics and Literature. Hermeneutics, Neo-hermeneutics, Literature Written by Women and Gender Studies.

Relevant Publications:

“Flor y canto. Presencia de García Lorca”. In Cázares Hernández L y Zamudio LE. (Eds.) Gaviotas de Cruz Abierta. Diana Morán. Encallar en los arrecifes de la espera. México: Universidad Autónoma Metropolitana, Unidad Iztapalapa, 2016. pp. 119-130; “¿Es el cuerpo erotizado ‘oscuro objeto del deseo?’” In Sáenz A, Vivero Marín CE, Peña Doria, OM, Gutiérrez García RM. (Eds.) Erotismo, cuerpo y prototipos en los textos culturales. Universidad Michoacana de San Nicolás de Hidalgo/Universidad de Guadalajara/Centro de Estudios de Género/Universidad Autónoma de Nuevo León. México: Editorial Silla Vacía, 2015. pp. 33-50; “Diversas modalidades de discurso configuradoras de una geografía sin fronteras en Las muertes de Natalia Bauer de Aline Petterson”. In José Ramón Ruisánchez (Ed.) Libre Mercado. Literatura y Neoliberalismo. México: Universidad Iberoamericana, 2015, pp. 165-175.

Contact: gloria.prado@ibero.mx

Sonia Montes Romanillos

Ph.D. in Hispanic Language and Literature, University of California-Berkeley

M.A. in Education with specialty in Applied Linguistics, B.A. in Hispanic Literature, Instituto Tecnológico y de Estudios Superiores de Monterrey

Lines of Research:

Latin American Culture, Literature, Orality and Alternative Proposals. Spanish as Global Language, it's diversity and relation with other languages.

Relevant Publications:

"The Dialect of Vargas Llosa's Storyteller". In Laura Callahan (Ed.) *Spanish and Portuguese across Time, Place and Borders: Studies in Honor of Milton M. Azevedo*. Palgrave Macmillan, 2014. pp. 93-107.

Contact: sonia.montes@ibero.mx

Cecilia Salmerón Tellechea

Ph.D. and M.A. in Hispanic Literature, El Colegio de México

B. A. in Latin American Literature, Universidad Iberoamericana

Lines of Research:

Hermeneutics and Literature. Literature of the Southern Cone: from Macedonio Fernández to Jorge Luis Borges to Ricardo Piglia.

Contact: cecilia.salmeron@ibero.mx

IDEAL PLAN

| | |
|----------------------------|--------------------|
| First semester | 24 credits |
| Research Seminar I | 8 |
| Literary Theory | 8 |
| Elective Seminar | 8 |
| Second semester | 24 credits |
| Research Seminar II | 8 |
| Literary Criticism | 8 |
| Elective Seminar | 8 |
| Third semester | 24 credits |
| Research Seminar III | 8 |
| Hermeneutics | 8 |
| Elective Seminar | 8 |
| Fourth semester | 28 credits |
| Research Seminar IV | 8 |
| Final | 20 |
| Compulsory Seminars | 56 credits |
| Elective Seminars | 24 credits |
| Final Credits | 20 credits |
| Total | 100 credits |

ELECTIVE SUBJECTS

- Folklore and Orality I
- Folklore and Orality II
- Mexican Poetry and Narrative I
- Mexican Poetry and Narrative II
- Textuality and Interdisciplinarity Seminar I
- Textuality and Interdisciplinarity Seminar II
- Literature Didactics

ADMISSION PROCEDURES

1. Contact the Postgraduate Programme Coordinator
2. Read the applicants' document and notice the importance of finding a dissertation supervisor, as well as having a well written and clear project
3. Follow the admission procedure for both, the Literature Department (internal admission) and the School Service Directorate.

Deliver the following documents:

- Original birth certificate
- Simple photocopies of university degree and professional license, or evidence of graduating from B.A. or M.A. Copies will be verified against original documents
- Subjects Application
- Application form (provided by School Service Directorate along with new admission instructional materials)
- Letter of Acceptance to the Graduate Program
- Letter of Commitment and Addendum duly completed and signed (also provided by School Service Directorate)
- Application process payment receipt

Foreign Students

Foreign country applicants or Mexicans coming from foreign institutions must also deliver:

- Birth certificate legalized for México.
- Revalidation of studies extended by the Mexican Ministry of Public Education. If the documents are not in Spanish, they must be translated by an authorized translator.
- Photocopy of Migration Form FM-2 (the student is responsible of keeping his/her migratory status in Mexico up to date).

For further information, please contact:

alethia.alfonso@ibero.mx

LINES OF RESEARCH

1. Construction of Meaning in Cultural Objects, Theater Textures and Textuality.
2. Hermeneutics and Literature.
3. Latin American Culture, Literature, Orality and Alternative Proposals.



IBERO
Ciudad de México • Tijuana